

JAPANESE FOLDED PATCHWORK BAG

A Quick Machined Method
Instructions by Lynne Edwards

Use the Creative Grids Rotary Cutting Circles
To speedily cut and stitch this attractive design



Requirements:

24" of the main fabric for the bag.

24" of another fabric to line each circle. This fabric shows at the very edge of each folded circle, so choose a toning or contrasting shade to the main fabric.

1/2 yd of fabric for the centers of each folded circle and the bag handles.

28 squares of thin batting each cut 3 1/4" x 3 1/4" plus 2 strips of batting each 2" x 20".

Construction:

1. From both the main bag fabric and the lining fabric cut 4 strips 5 1/4" wide. Place a strip of each fabric together with right sides facing. Use the **Creative Grids 5 1/2" Rotary Cutting Circle** and a small rotary cutter to cut circles from the layered strips (Fig.1). Cut a total of 28 pairs of circles.
2. Machine stitch a 1/4" seam around each pair of circles (Fig.2).
3. Trim the seam allowance down to about 1/8" - if you have a pair of pinking shears use these to reduce the bulk of the seam allowance (Fig.3).

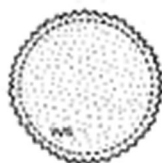
1.



2.



3.

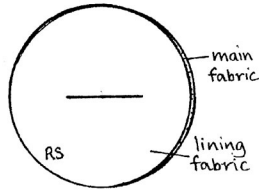


4. Carefully cut a slit about 2½" long in the lining fabric of each circle. Do not cut through to the main fabric! Keep the slit in the center of the shape, following the grainline or weave of the fabric (Fig.4).
5. Turn each circle right side out through the cut slit. Run a Hera or similar tool inside the circle along the seam to push the edges of the fabric out to make a true circle shape. Press well (Fig.5). Make 28 of these turned circles.
6. Cut a square from template plastic measuring 3½" x 3½". Place this on the lining side of a circle, keeping the grain of the fabric and the cut slit parallel with the top and bottom of the plastic square (Fig.6). Draw round the plastic square using a fine marking pencil. Repeat this on the lining side of each of the 28 circles.

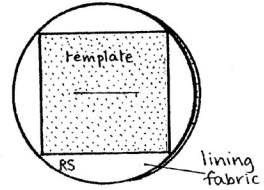
4.



5.

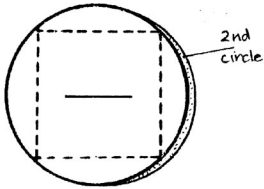


6.

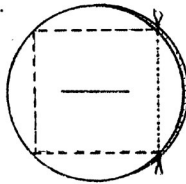


7. Place 2 circles with right sides facing and both slits running across each circle as in Fig.7.
8. Pin and stitch the 2 side drawn lines together, matching the corners of the circles exactly (Fig.8). Open out the circles and press back the 2 stitched edges firmly (Fig.9).

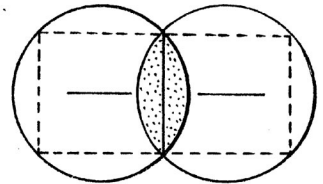
7.



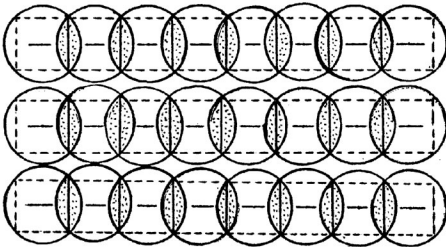
8.



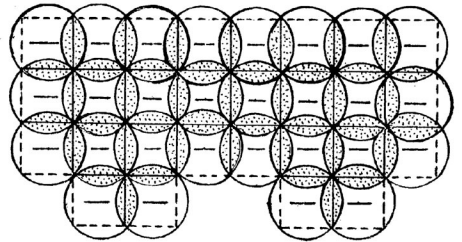
9.



9. Use the same method to pin and stitch together 3 rows each of 8 circles (Fig.10).
10. Carefully pin and stitch the 3 rows together. Then add 2 more pairs of circles for the base of the bag as in Fig.11.



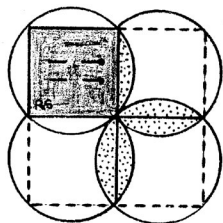
11.



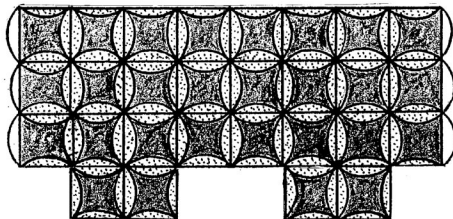
11. From the fabric chosen for the centers of the circles cut 28 squares each 3½" x 3½". From the batting - I use Hobbs Heirloom 80/20 - cut 28 squares each 3¼" x 3¼".

12. Place a square of batting in the center of a drawn square on one stitched circle. It will be slightly smaller than the drawn square. Place a square of center fabric on top of the batting, right side upwards. It should overlap the batting by about $\frac{1}{8}$ " on all sides with its edges matching the drawn square on the circle. Pin the center firmly in place (Fig.12) or baste if you prefer. Repeat this in each of the 28 stitched circles.
13. Fold the curved edges of each circle over the center square on all sides. Pin or baste in position, taking care to cover the raw edges of the center fabrics at the corners. Leave the curved edges at either end unturned (Fig.13).

12.



13.

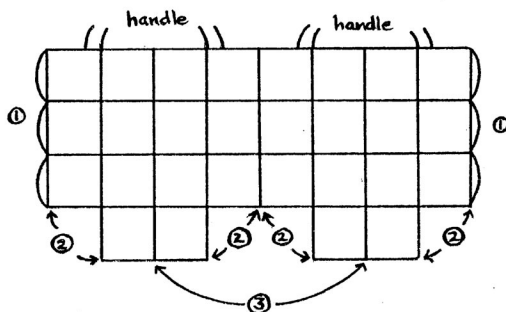


14. Topstitch the curved edges by machine or hand-quilt them in place using a large stitch in contrasting thread. More decorative stitching can be done in each center at this stage if wished.

Constructing the Bag:

15. Pin and stitch the 2 end sections together to make a tube, marked as Step 1 in Fig.14. Press the curved edges back and stitch them into place on each circle to match the rest of the design.
16. To construct the base, turn the tube inside out. Swing the edges of each pair of base squares round to meet the bottom edge of the adjacent squares, shown as Step 2 in Fig.14. Whipstitch these edges together. Finally whipstitch the center seam of the bag base together (Step 3 in Fig.14). Turn the bag right side out.

14.



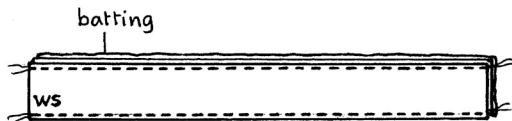
Making the Handles:

17. Cut 4 strips of the fabric used for the circle centres each measuring 2" x 20". Also cut 2 strips of thin batting to the same measurements.

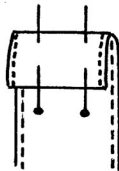
4.

18. Place 2 fabric strips together with right sides facing. Lay a strip of batting on top and pin the 3 layers together. Machine a $\frac{1}{4}$ " seam along each of the 2 long sides. Repeat this with the other 2 strips of fabric and the batting strip (Fig.15)
19. Turn each handle through to the right side and press firmly. Topstitch along each of the 2 long sides.
20. Trim each end evenly. Fold a $\frac{1}{2}$ " turning and pin or baste it in place (Fig.16).
21. Position each strip on the bag as shown in Fig.14 with the folded turning placed against the inside of the bag. Hand-stitch the handle ends firmly to the bag.

15.



16.



Lynne Edwards for Checkers
Houston Quilt Market
October 2002