

Woven As One

Cut your own strips or use the popular pre-cut strips to weave your own cloth — from cloth! Creating a completely new texture this small quilt, wallhanging or table topper (you decide!) has lots of visual potential. Make the vertical strips darker or a different color than the horizontal strips. Or, pay no attention to the colors and placement of your fabrics. Either way, the results will be stunning!

Fabric requirements

(based on 42 inches of usable fabric)

vertical strips — 25 strips 2-1/2" wide
horizontal strips — 25 strips 2-1/2" wide
base fabric — one yard
border fabric — 5/8 yard
backing fabric — 1-1/4 yards
binding — 1/2 yard

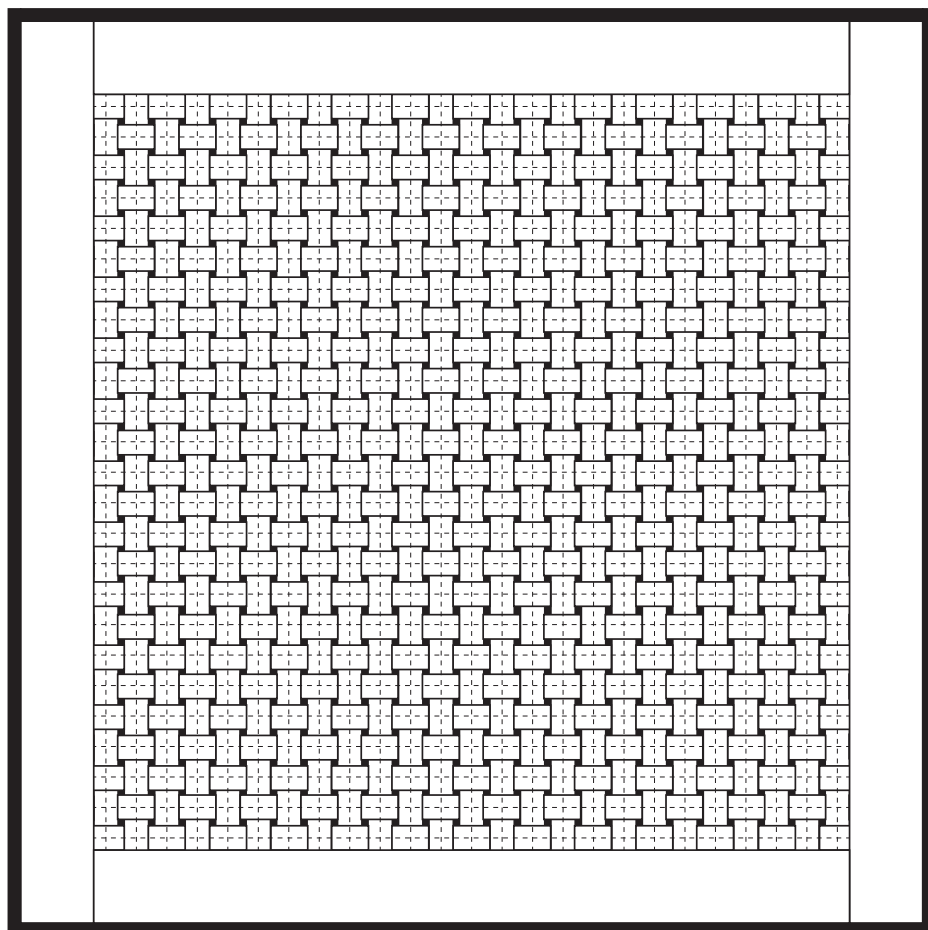
Cut — Read all directions

vertical strips — cut 25 strips 2-1/2" x 33"
horizontal strips — cut 25 strips 2-1/2" x 33"
base fabric — cut one square 31-1/2" x 31-1/2"
border fabric — cut four strips 3-3/4" x wof*
backing fabric — cut one square 42" x 42"

*wof — width of fabric

Construction — All seams are 1/4"

1. Take each of the 25 vertical and 25 horizontal strips and fold as shown in diagram one. The finished width of each strip is 1". Press flat. Tip: Cut a thin piece of cardboard 1" wide and use this as a guide for folding and pressing.
2. With the right side up, pin or tape the base fabric to a flat working surface. Then pin or tape the top and bottom edge of each vertical strip onto the base fabric. The first vertical strip on the left should be placed 1/4" from the edge of the top left of the base fabric. Leave 1/4" in between each strip. See diagram two. Note: Vertical strips will be slightly longer than your base fabric on the lower edge.
3. From the top right, begin weaving each horizontal strip "over and under" each vertical strip as shown in diagram two. Leave 1/4" in between each horizontal strip. Pin or tape the ends in place. Note: Horizontal strips will be slightly longer than the base fabric on the left-hand edge. When you are done weaving all the strips in place trim the strip ends along the left-hand side and lower edge of the base fabric.



approximately 38" x 38"

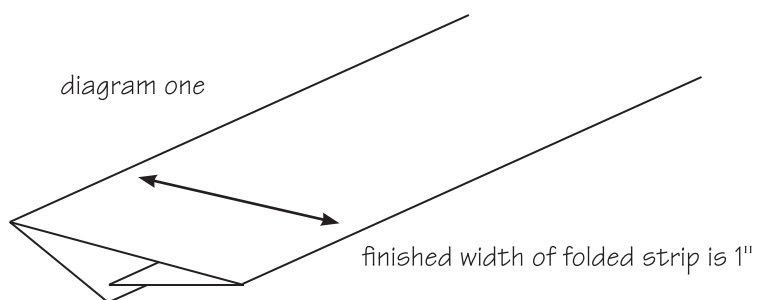
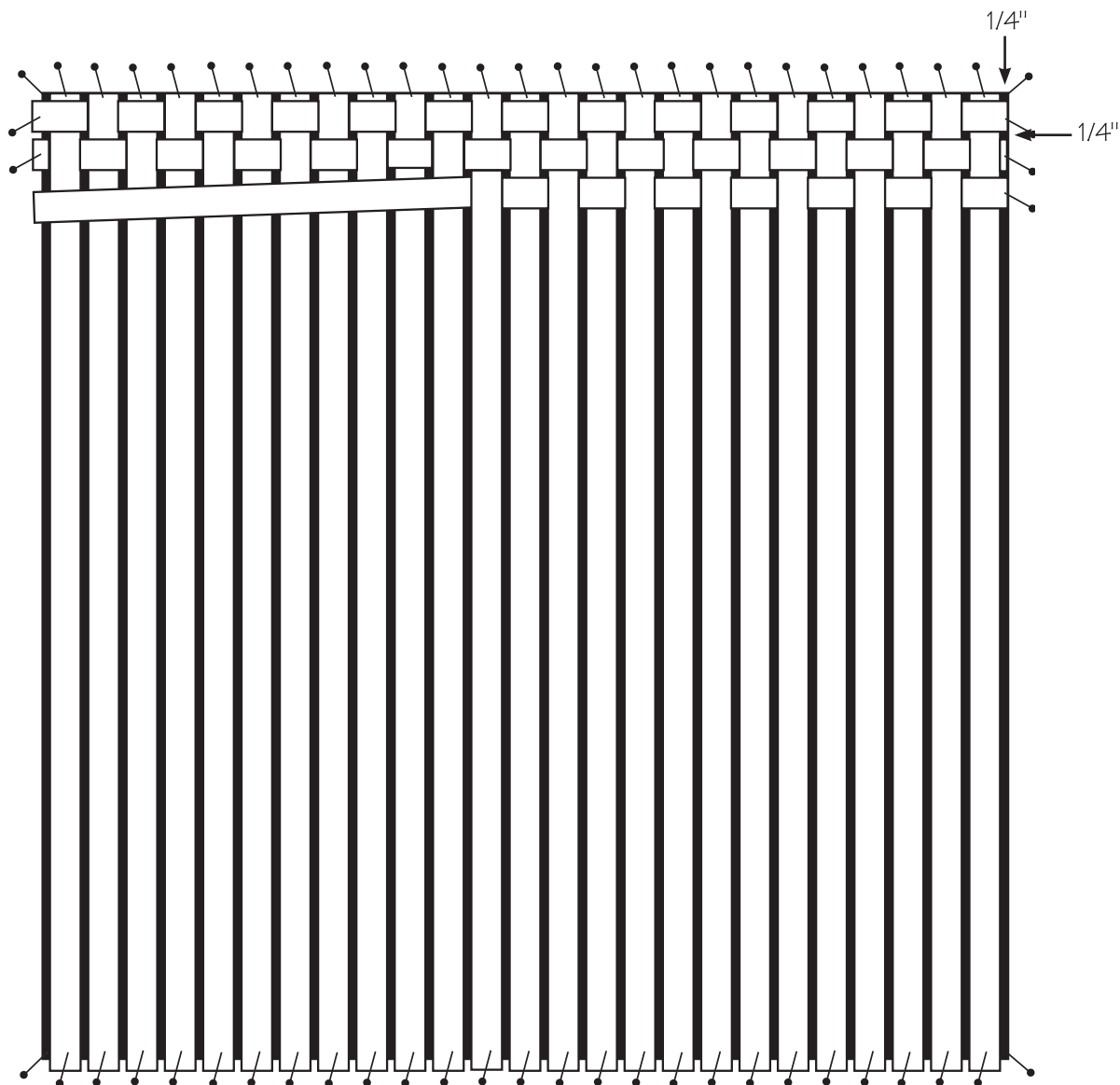


diagram two



4. Now attach the strips to the base fabric by pinning the strips in place along all four edges and randomly throughout the center of the quilt. It no longer needs to be attached to the flat working surface.
5. Sew the borders onto all four sides of the quilt center. Press and trim ends as needed. This will fasten the edges of the woven strips in place. Keep the center randomly placed pins in place, still holding the woven strips to the base fabric.
6. Layer and pin the quilt top with batting and the backing fabric. Machine quilt down the center of each strip — horizontally and vertically — fastening all the layers together. Alternatives: You might want to quilt close to both edges of each strip instead of down the center. Quilting down the center of the strips will leave the edges loose adding texture to the whole piece. Quilting down the edges of the strips will make them stay flat. You might also prefer to hand tie the quilt instead of machine quilting it.
7. Bind the edges of your quilt and enjoy!

More ideas:

- Try the same weaving technique with any width strips. Or, leave your strips unfolded with the raw edges showing.
- Make the piece larger or smaller. How about placemats or table runners?
- Leave more than 1/4" in between the strips so more of the base fabric shows.

This pattern has been provided to you by: